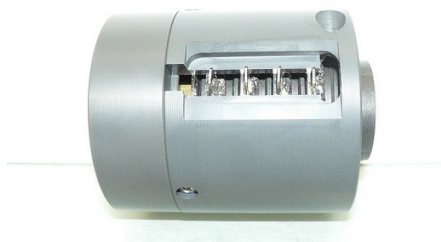


Electrical rotary distributor with limited number of rings.  
Modulare type manifold suitable for power ratings,  
digital and analog signals.  
Use Flex technology that avoids electrochemical  
corruption of the rings



**Technical specifications:**

- Ring-brush contact resistance: < 20 mohm
- Rings: Brass
- Available rings with silver or gold treatment
- Brushes: Multi-contact system
- Input/Output: Faston
- Standard degree of protection: IP00

**Applications:**

- Packaging
- Flexographic printing machines
- Wrapping machine for stretch film

Model	Rings N°	Diam Hole (mm)	Inner diam (mm)	Current Amp. a 240 VAC	V (AC/DD)	Max RPM
CP070-0418BA	4	18	40	mA-10A	24-400	50

