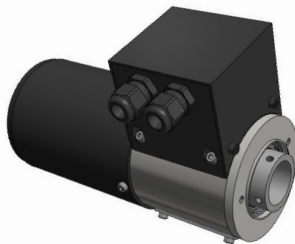


It is a non-contact temperature transducer that detects signals from up to 2 thermoelements simultaneously. Programmable for use with common probes (PT100, TCJ, PT1000, K, or combination of these). The collector returns an analogue 4-20 mA signal. Can be integrated with an electric manifold for power management up to 40 A.



Technical specifications:

- Galvanically isolated
- Max operating speed: 900 RPM
- With "dust bean" for easy maintenance
- Compact sizes
- Standard diameter 90mm
- Customizable from 2 to 6 ways of power
- Operating temperature from 0 to 45 ° C
- Standard degree of protection: IP40

Applications:

- Machines with temperature reading
- Packing and packaging
- In-line welding
- Hot cutting machines
- Plastic printing machinery

Model	Power ways	L mm	Analog ways	Output signal (mA)	Power supply VDC
2	2x40A (45A peak)	184	2	4 - 20	24
4	4x40A (45A peak)	200	2	4 - 20	24
6	6x40A (45A peak)	216	2	4 - 20	24

